

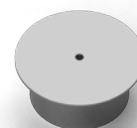
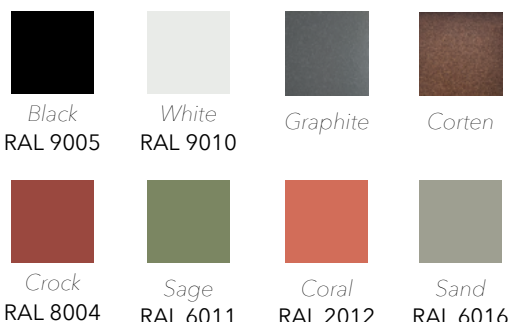
CEILING ROSE - COLORS

The ceiling rose is the perfect solution for installing pendant and wall lamps with style and safety. Designed to ensure stable and durable mounting, it seamlessly integrates with the aesthetic of any environment, featuring a modern and minimalist style. Available in a Black finish and in sizes 90, 140, and 180 mm.

TECHNICAL SPECIFICATIONS

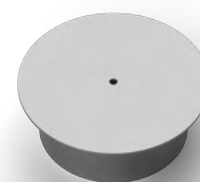
Standard	IEC/EN 602208 IEC/EN 60670-1
Material	Galvanized steel
Treatment	Powder coating
Protection grade IP	IP20
Impact resistance	IK10
Isolation class	I
Integrated power supply	24V DC - 6W 24V DC - 12W 24V DC - 25W 24V DC - 90W
Supply voltage	230V
Storage temperature	-50°C - +80°C
Operating temperature	-40°C - +70°C

AVAILABLE COLORS



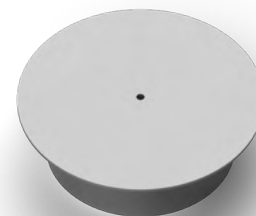
RSB90-6

Dimensions (mm) Ø 90
With power supply 24V DC - 6W



RSB140-12 RSB140-25

Dimensions (mm) Ø 140
With power supply 24V DC - 12W | 24V DC - 25W



RSB180-90

Dimensions (mm) Ø 180
With power supply 24V DC - 90W