

## GLOBO SOSPENDED CORTEN

GENUIT Globi are luminaires made with the quality standards of products for industrial use. The shock-resistant tempered high thickness glass diffuser, the porcelain lamp holder and the surface treatment, guarantee great resistance of the product. We recommend the use of GENUIT ceiling lights for all applications where a long-lasting light source is required.

### TECHNICAL SPECIFICATIONS

Standard	Directive 2014/35/UE EN 60598-1 EN 60598-2-1 Directive 2011/65/UE EN 50581
Material	Aluminum alloy (body) Prismatic tempered glass (diffuser)
Treatment	Powder coating (protective treatment on request)
Protection grade IP	(IP according EN 60598-1) IP66
Impact resistance	(IK grade according IEC/EN 62262) IK10
Isolation class	I
Entry fitting	M20
Bulb fitting	E27 in porcelain   Led Module
Supply voltage	230V
Conductors cross section max	2,5 mm <sup>2</sup>
Cable passage diameter	Ø 16 mm
Storage temperature	-50°C - +80°C
Operating temperature	-40°C - +70°C



#### L90GP Corten

*Dimensions (mm)*  
113x126x165



#### L90GM Corten

*Dimensions (mm)*  
140x157x206



#### L90GG Corten

*Dimensions (mm)*  
176x194x260

## LED MODULE Ø46

Constant voltage LED module, with PWM current input or DC current input.

Max power 9W

Luminous flux max 1279 lm.

There are 20 LEDs Liteon AZL for minimum CRI 80.

Internal module configuration: N. 4 parallel from N. 5 LEDs in series.



### TECHNICAL SPECIFICATIONS

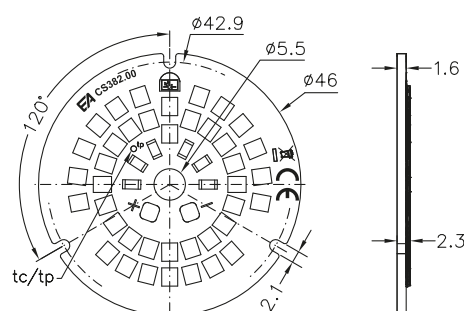
Standard	EN62031   EN62471
LED module	With PWM Current Input   Input to DC Current
Temperature	2700 K   3000 K
Lumen	1210 lm   1279 lm
Voltage	24V
Printed circuit material	IMS
Printed circuit board	UL
Protection grade	IP20
Dimmerable	With standard power supply with Dali, Triac technology, Push, 0-10V, 1-10V
Beam angle	120°
LED numbers	48
PCB	IMS 1.6 mm
LED Type	OSRAM*2835
RA/CRI	Standard CRI>80,
Sep MacAdam (SDCM)	3
R9	CRI 80 ≥ 0
Factor of Safety (FoS)	1
Lumen maintenance factor	L70-B50>70.000h @tc=90°C/TM21
Maximum operating voltage of insulation	60V

### RICL4627

Dimensions (mm)  
Ø 46 - 1.6 x 2.5

### RICL4630

Dimensions (mm)  
Ø 46 - 1.6 x 2.5

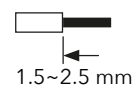


### Cablaggio / Wiring

Conduttore rigido - Solid conductor

Conduttore flessibile - Flexible conductor

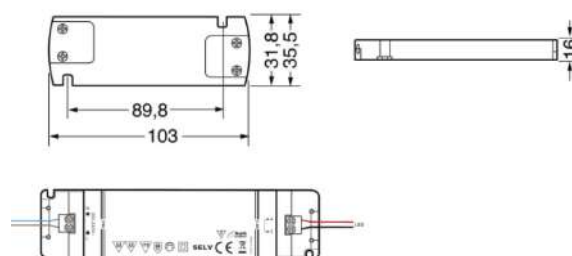
0.25~0.75mm<sup>2</sup> / AWG24~AWG18



### AVAILABLE DRIVERS

#### AM6

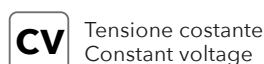
Driver Mini 6W - 500 Ma



\*Illustrative images only.

Please note that Genuit does not assume responsibility in the event that the lamps and/or drivers supplied are not the same as the above

\*Module RICL4627 or RICL4630, RICL7027 or RICL7030, integrated depending on the model chosen.



## LED MODULE Ø70

Constant voltage LED sheet, 24vdc

Max power 17W

Luminous flux max 2379 lm.

Designed for micro push connectors for quick connection of cables. Not self dissipate.



### TECHNICAL SPECIFICATIONS

Standard	EN62031   EN62471 IEC TR62778
LED module	With PWM Current Input   Input to DC Current
Temperature	2700 K   3000 K
Lumen	2312 lm   2379 lm
Voltage	24V
Printed circuit material	IMS
Printed circuit board	UL
Protection grade	IP20
Dimmerable	With standard power supply with Dali, Triac technology, Push, 0-10V, 1-10V
Beam angle	120°
LED numbers	48
PCB	IMS 1.6 mm
LED Type	OSRAM*2835
RA/CRI	Standard CRI>80
Sep MacAdam (SDCM)	3
R9	CRI 80 ≥ 0
Factor of Safety (FoS)	1
Lumen maintenance factor	L70-B50>85.000h @tc=90°C/TM21
Maximum operating voltage of insulation	60V

\*Module RICL10030, RICL7027 or RICL7030, integrated depending on the model chosen.

### RICL7027

2700K

Dimensions (mm)

Ø 70 - H 2.5 mm

(H 5 with micro push)

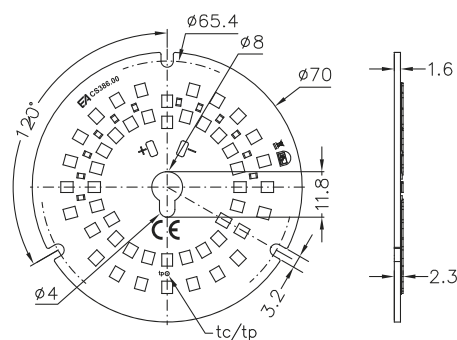
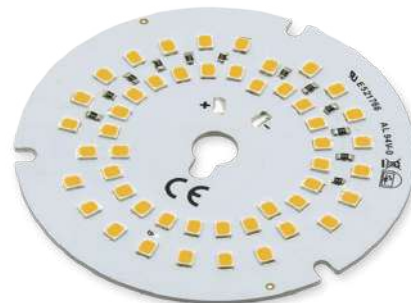
### RICL7030

3000K

Dimensions (mm)

Ø 70 - H 2.5 mm

(H 5 with micro push)



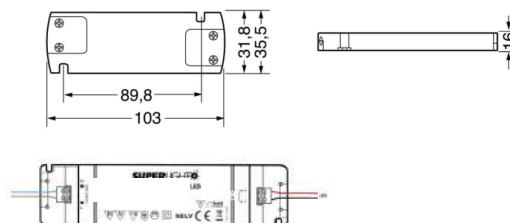
### AVAILABLE DRIVERS

**AL20**

LED 24V - 20W

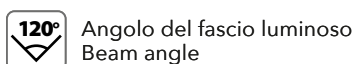
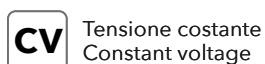
**AL30**

LED 24V - 30W



\*Illustrative images only.

Please note that Genuit does not assume responsibility in the event that the lamps and/or drivers supplied are not the same as the above figures.



## Compatible lamp - GX53

BY M AND L MODELS

LED bulb GX53 Silamp 4W or 9 W super thin and flat is an excellent alternative to led. The opaque cover provides a homogeneous light that does not bother the eyes, and the replacement is very quick and simple: it does not require changes to the system and goes directly to the current of the house 220V.

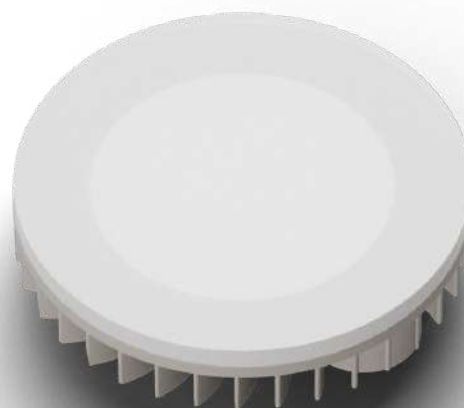
### TECHNICAL SPECIFICATIONS

Standard	EN62031 EN62471
LED module	With PWM Current Input   Input to DC Current
Temperature	2700 K   3000 K
Lumen	1825 lm   1920 lm
Wattage	4W or 9W
Input to DC current	from 0 mA to 700 mA
Protection grade	IP20

*\*Lamp not included*

#### **RICG4**

4W



#### **RICG9**

9W

